

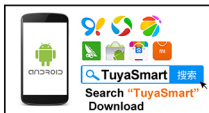


Tuya App Manual

- 1 Scan QR code to download Tuya APP or Search Tuya on APP store to download it.



OR



Scan QR code

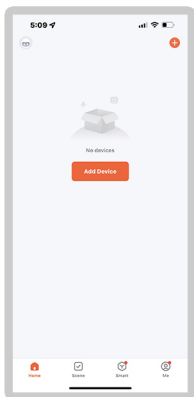
Search TuyaSmart to download APP

Press

Wait for 5 seconds for the indicator light to flash and start pairing.

2

Open Tuya APP to add new equipment



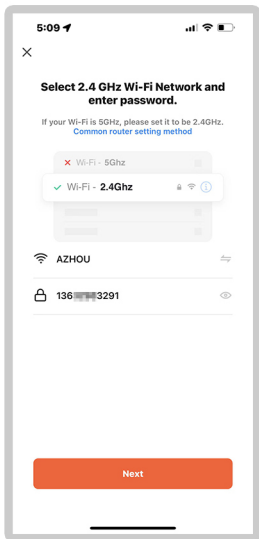
3

Select "Camera & Lock", click "Lock(Wi-Fi)"



4

Connect your phone to WiFi
and enter your password

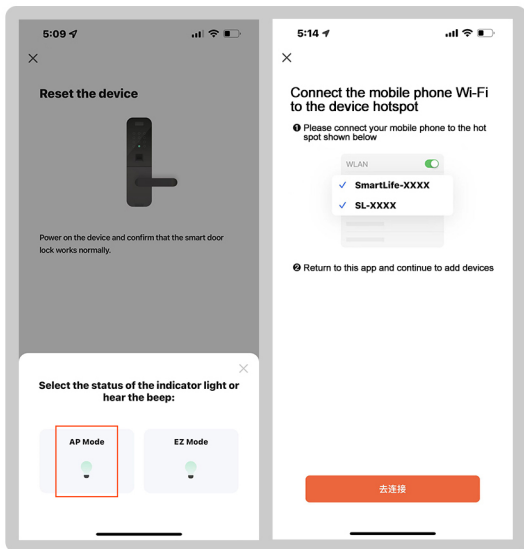


5

Confirm that the device indicator
flashes and click OK



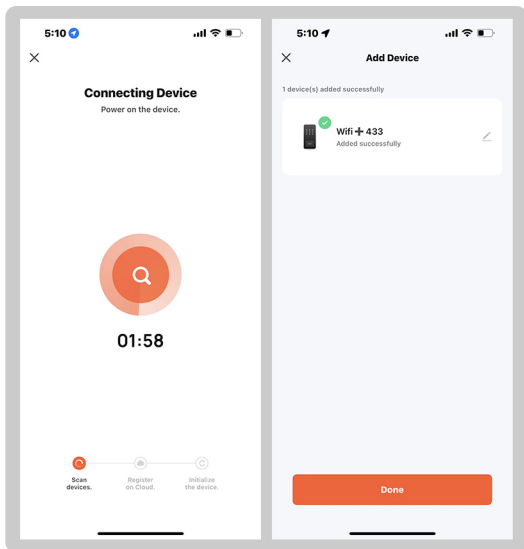
6 Select "AP Mode", Connect mobile WiFi to device hotspot.



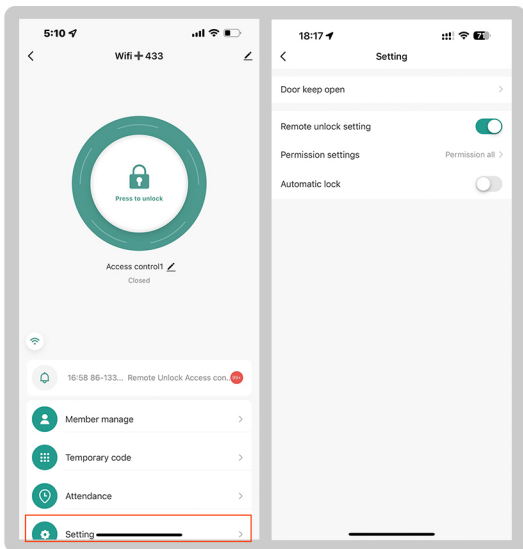
7 Mobile WiFi connection to device hotspot



8 Connecting, Added successfully, click "Done"



9 Click setting, open remote unlock setting



- 10 Select user, click "+" to add user, fill in name. click next step, then click "Add" to input 6 digits code or generated code randomly, fill in code name or card name, click "Save".

5:10

Cancel

Save

Me Administrator

6 Digit Code

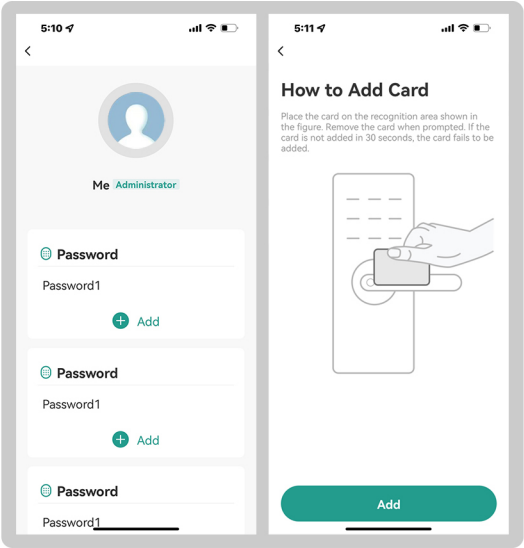
456789

Generate Randomly

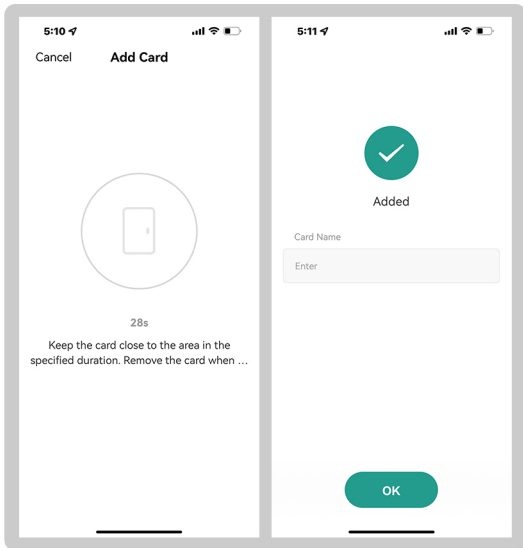
Copy

Password Name (Optional) Enter the name.

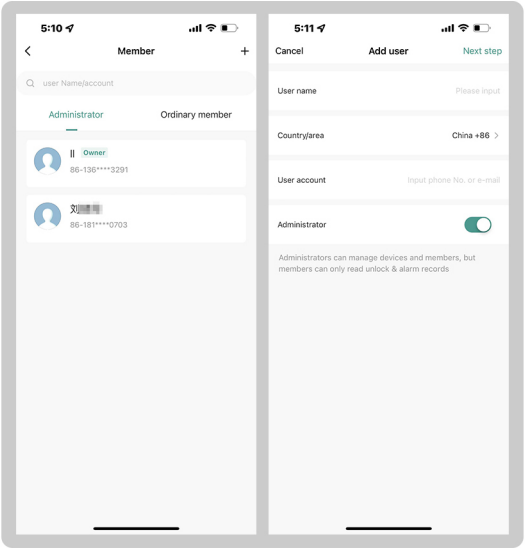
11 Add card by clicking start add



- 12 swiping one card within 60 seconds ,add card successfully,then fill card name snd click "Done"

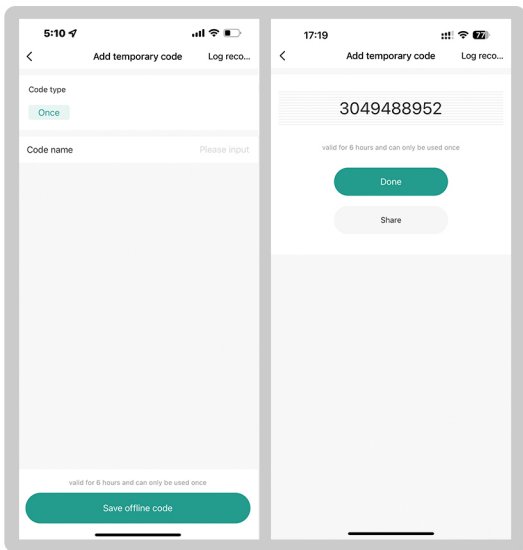


13 Click "Member management" to add members



- 14 Add a temporary code, enter a code name, click Save Offline Code, and complete

Note: The password is valid for 6 hours and can only be used once.



15 Click the log to view the door opening record

